

Product specification HORSE	Realized	13-02-2026
	Modified	-
	Revision N°	0

Article name:

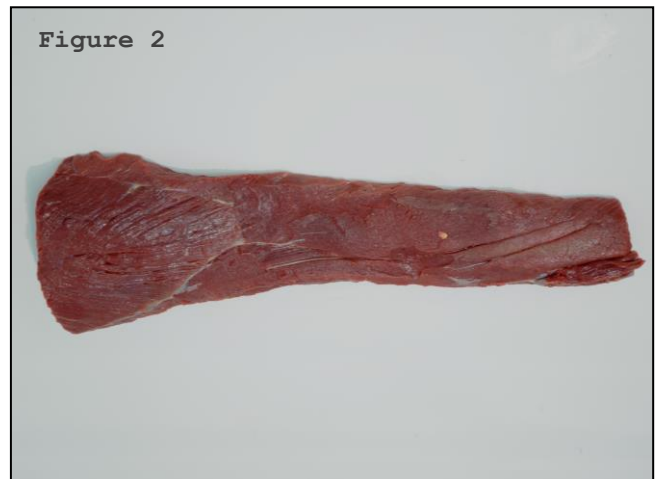
R40 R41 R42 R43

Carcass calibration:

Article code	R40	R41	R42	R43
Carcass size	L	H	S	P
Carcass Kg	68-88kg	89-106kg	107-131kg	+132kg

Description: Paardenrug dunne lende 1tp...L..L..c17kg
Horse saddle 1tp.....L..L..c17kg
Pferderuecken Roastbeef 1tp..L..L..c17kg
Faux filet de cheval 1tp.....L..L..c17kg
Lomo de caballo 1tp.....L..L..c17kg
Controfiletto di cavallo 1tp L..L..c17kg

Processing: Horse saddle peeled 1tp (**FIG.2**) Horse meat.



Packing:

- Saddle technical parts packed into Louisa Bag (VF03)
- Vacuum.
- Shrink.
- Packages according to calibration are placed into the carton.
- Labeling according to Labeling Instruction.

Frozen products:

- Maintenance -18°C
- Expiring date up to 36 months after freezing date.

Fresh products:

- Maintenance between 0 - 2 °C
- Expiring date 90 days after the production date.

Product specification	Realized	13-02-2026
HORSE	Modified	-
	Revision N°	0

Bacteriological limits according to Regulation:

- (CE) N° 2073/2005

- (SENASA) N° 3834/2008

- Plate count < 10⁵ ufc /cm²
- Salmonella spp absence in 100 cm²
- Enterobacteriaceae < 10³ ufc /cm²
- Escherichia coli < 10² ufc /cm²
- E. coli O157:H7 absence in 100 cm²
- Listeria monocytogenes absence in 25grs

Chemical Characteristics:

According to Reg. (UE) 2023/915 (on muscle meat)

- Cadmium < 0,2 mg/kg

GGO Status:

Products free from ingredients obtained by gene technology

Allergen information:

No allergen-containing raw materials used

Origin:

Argentina

Control date	Responsible	Signature

Made by: German Miño

Reviewed by: Alejandro van Avermaete